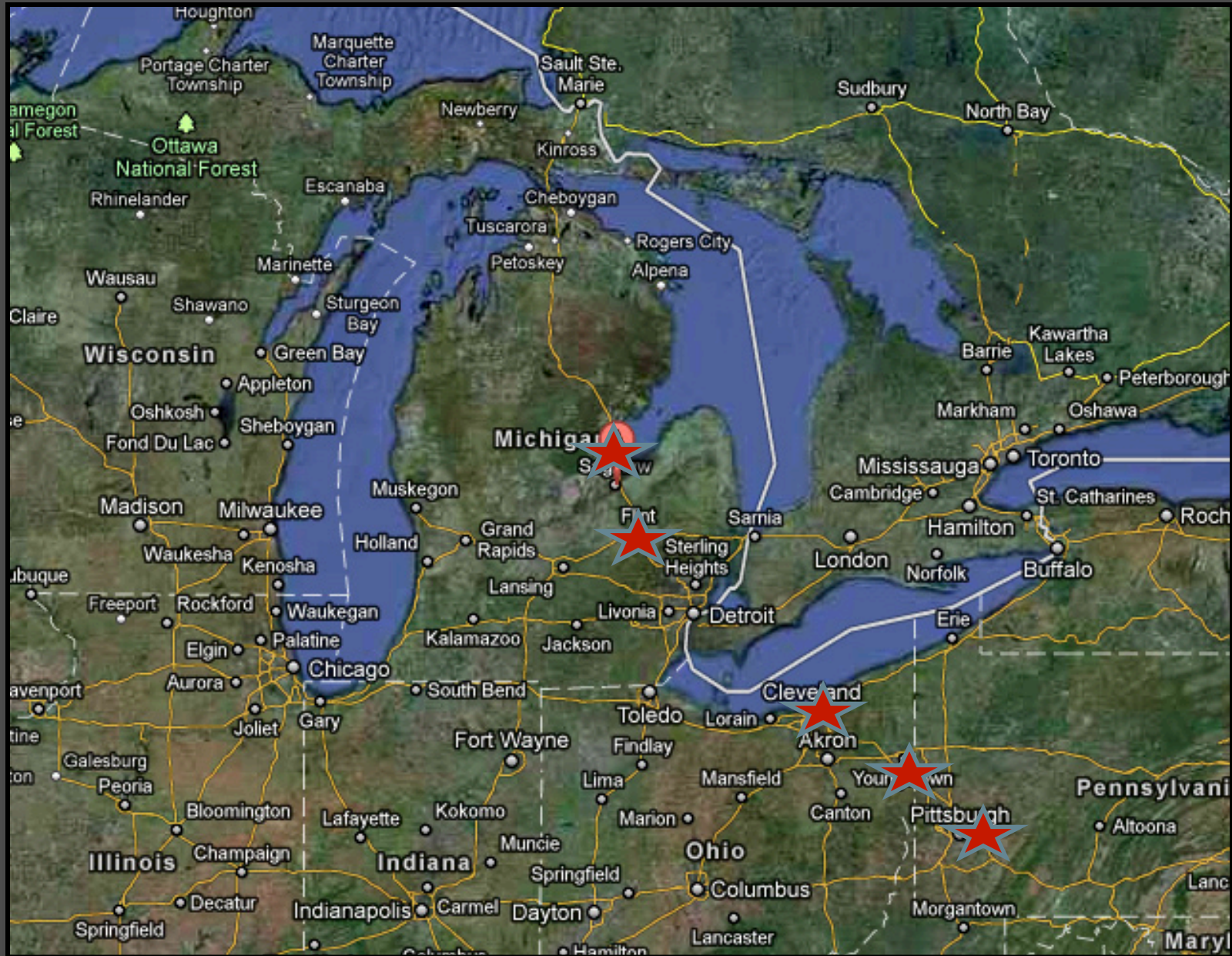
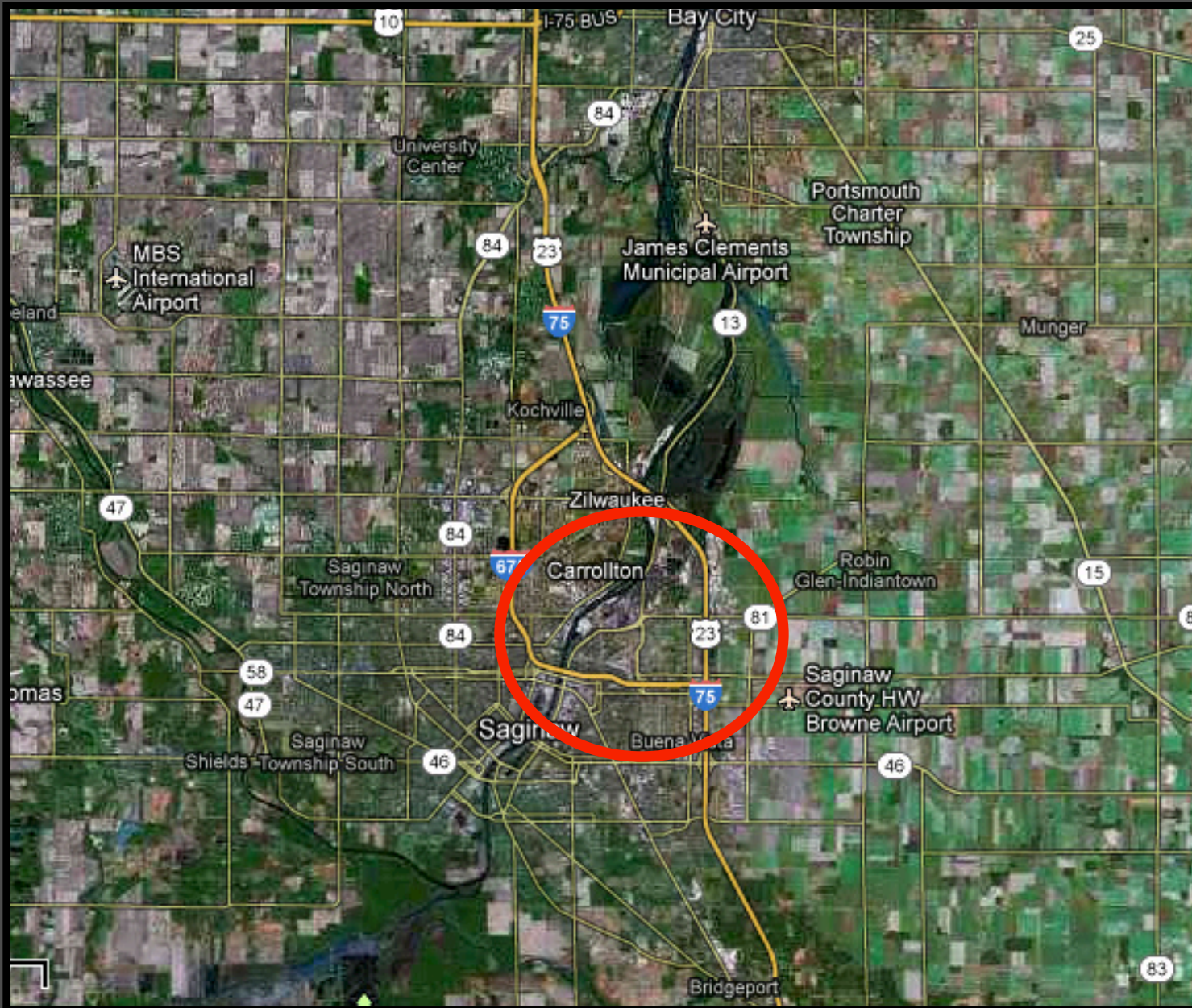




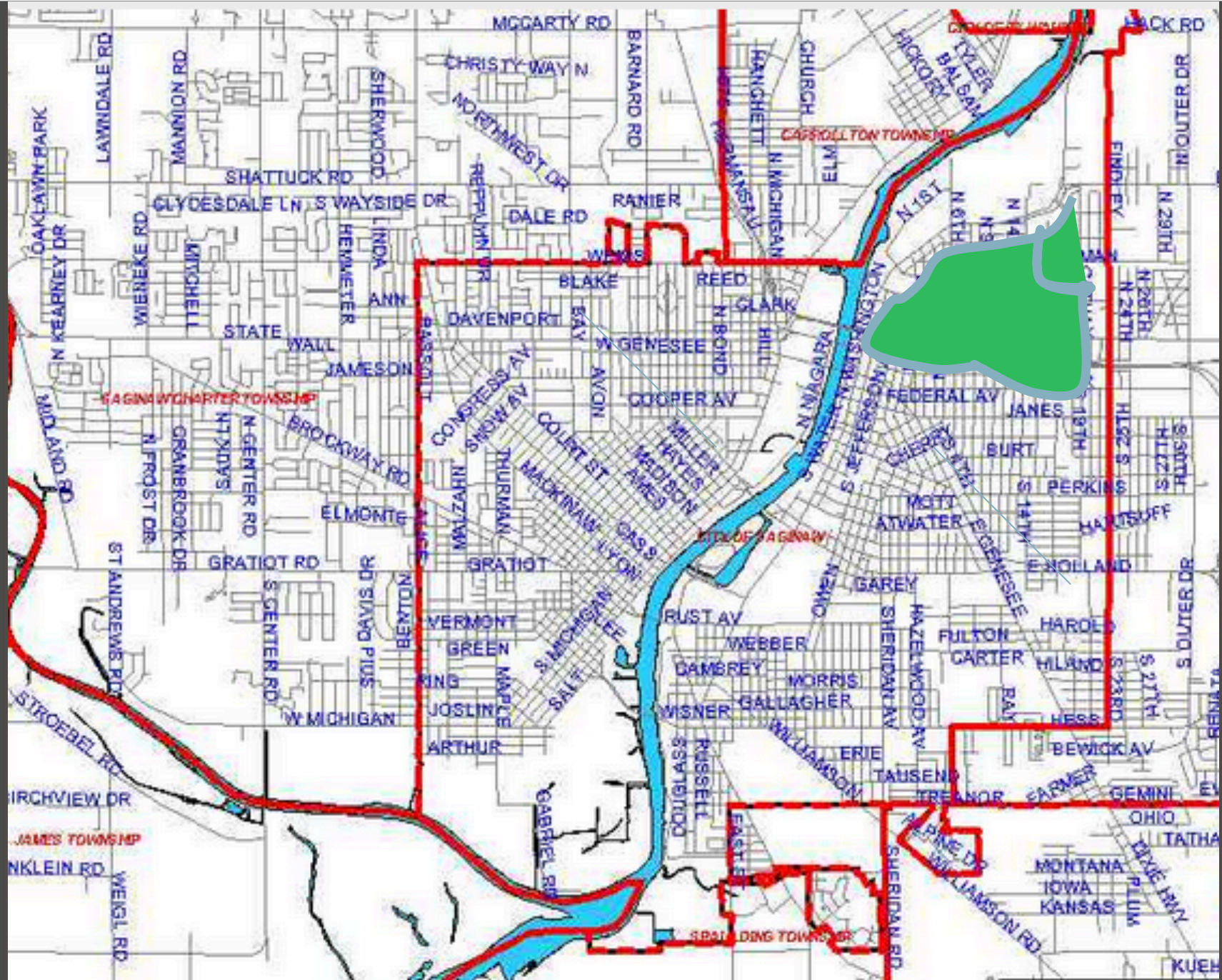
# CITY OF SAGINAW HISTORY

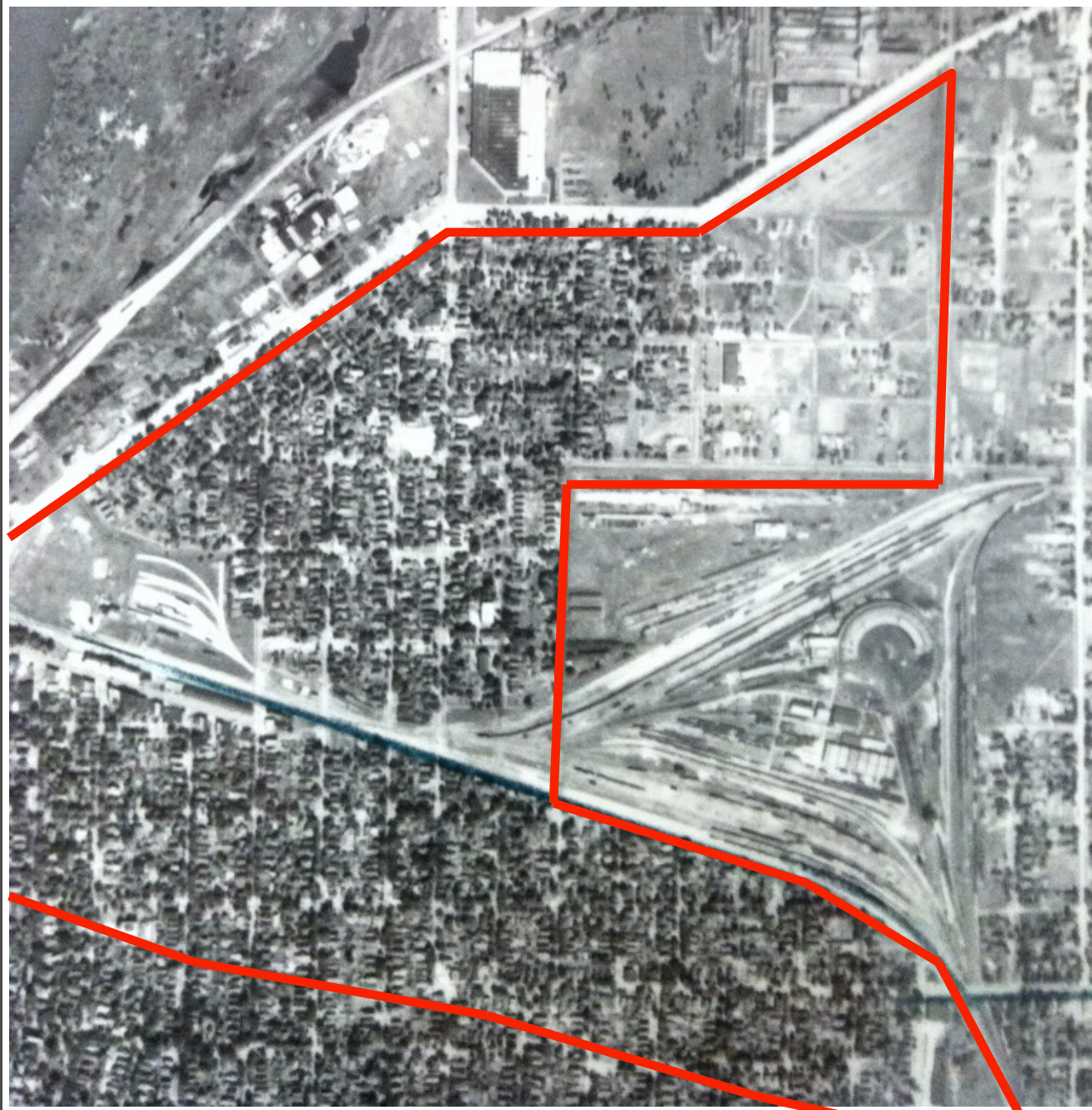


# Regional Location



City of Saginaw today

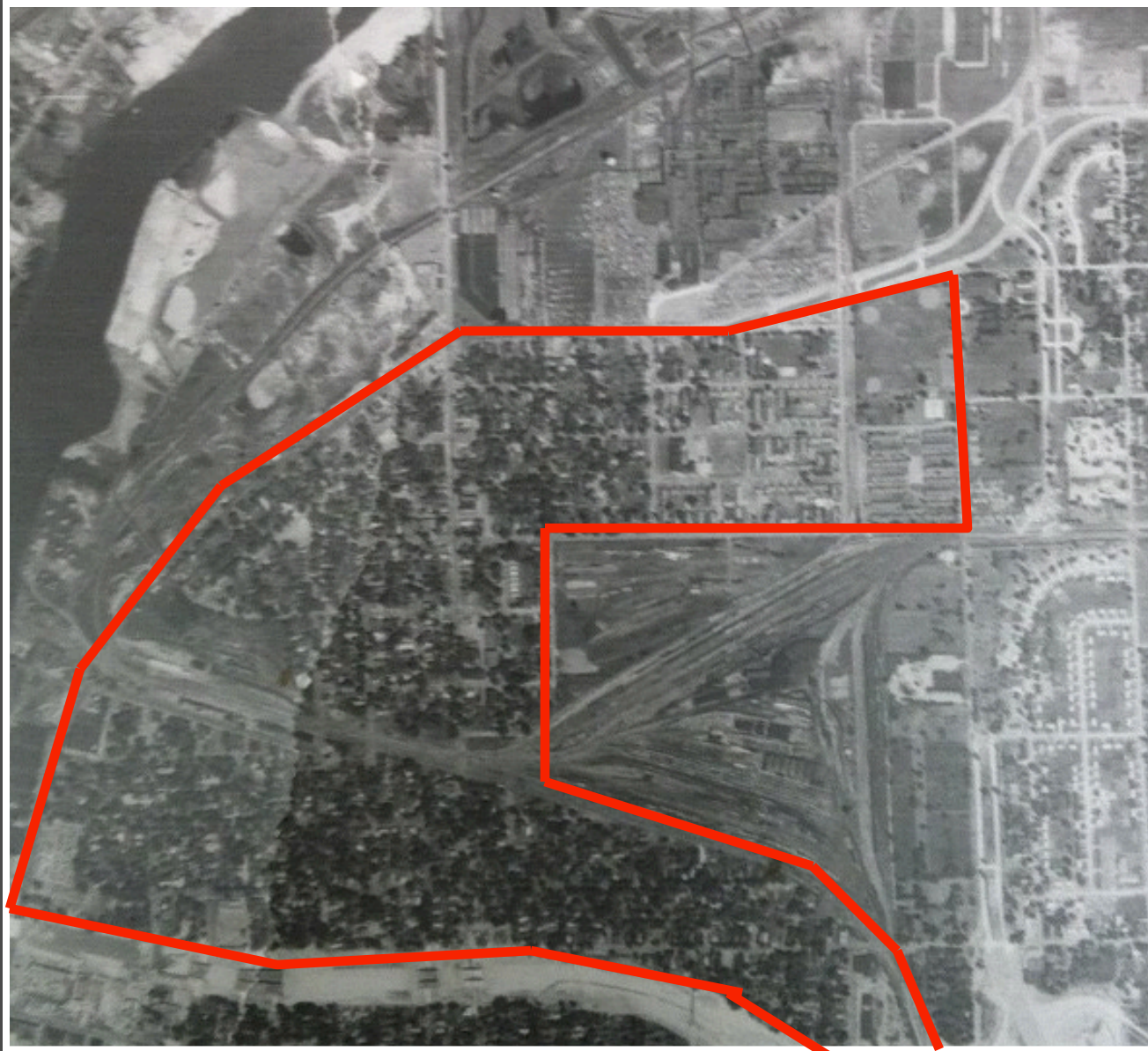




1940



1963

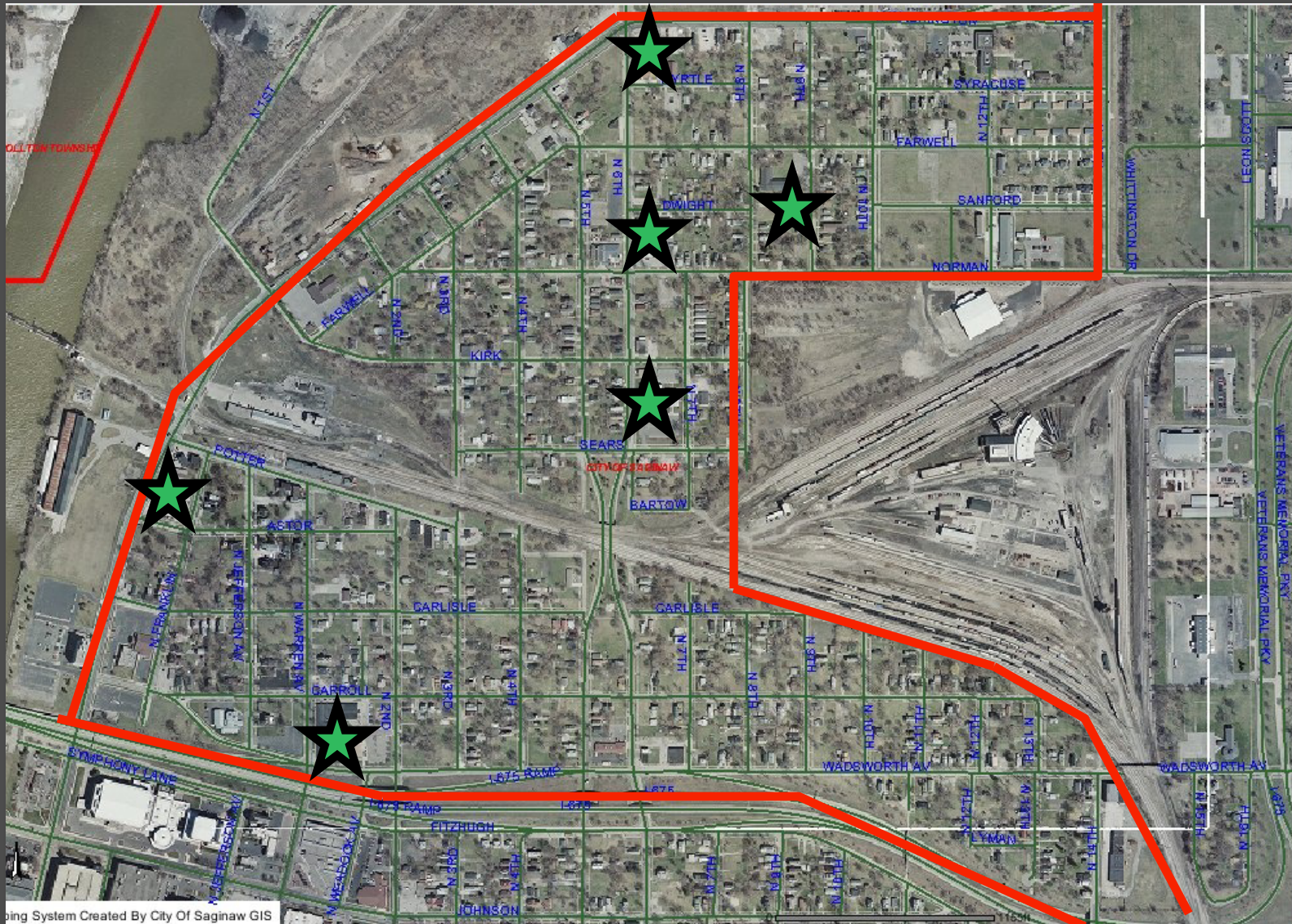


1970



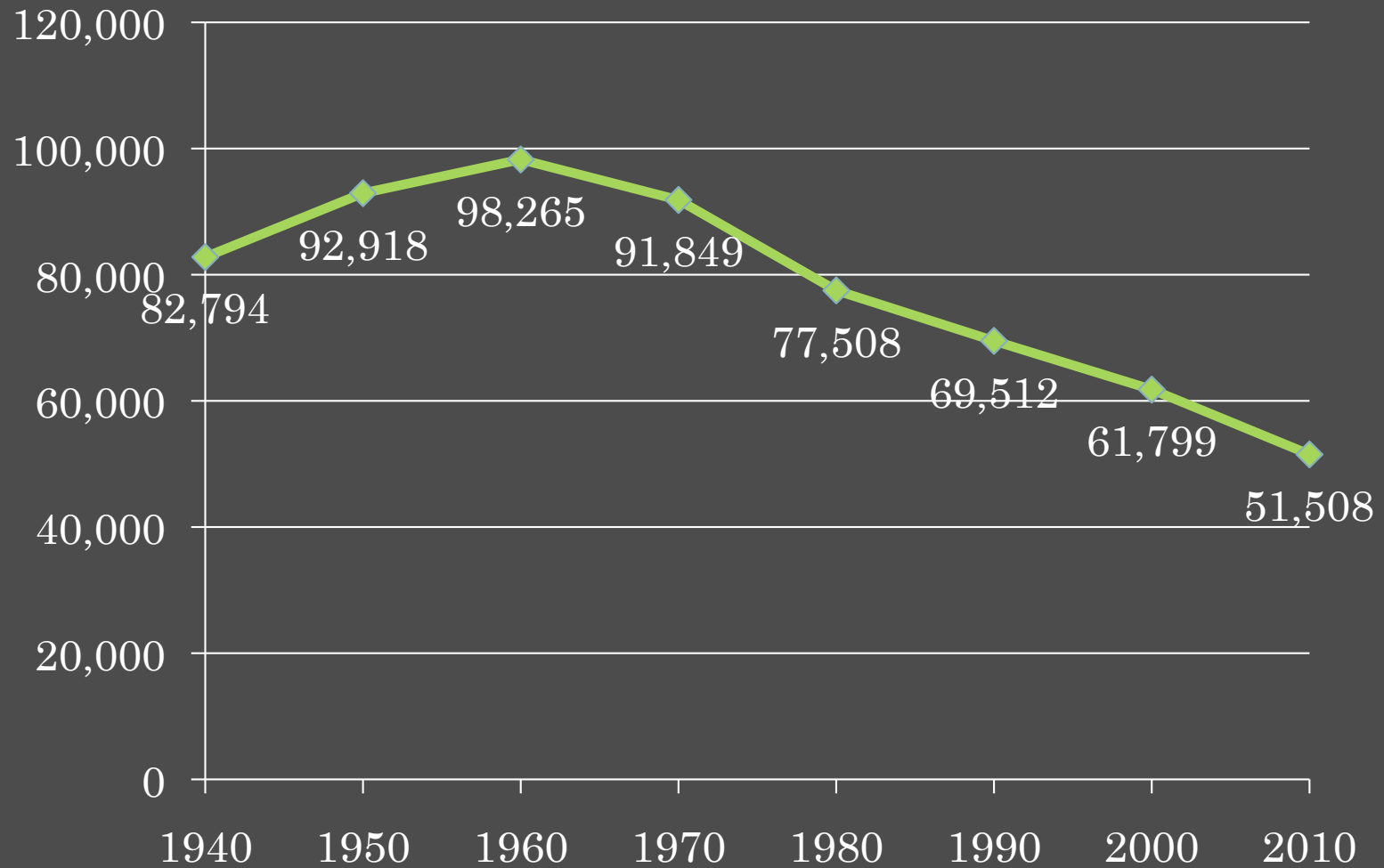
1988

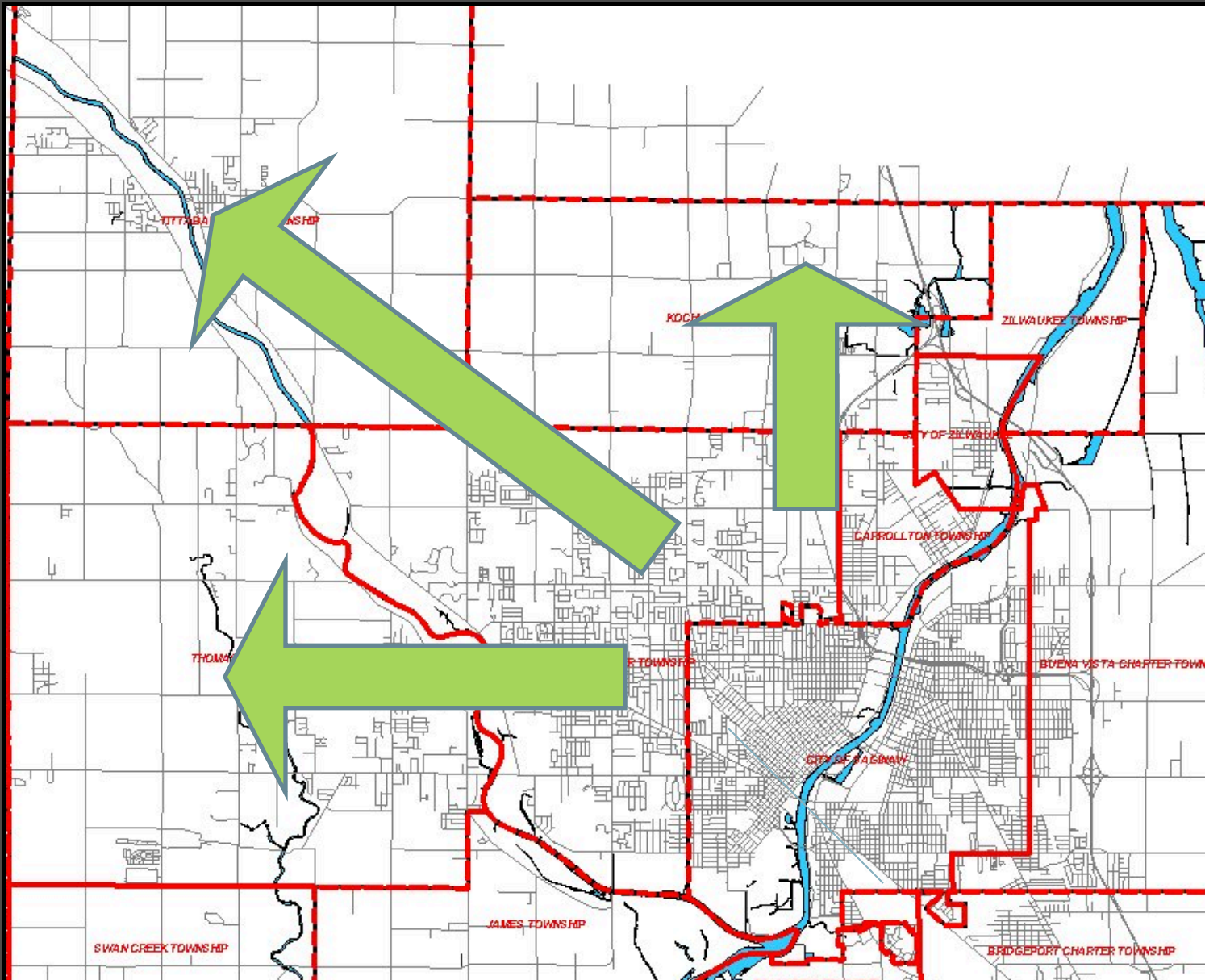




2011

# Saginaw Population

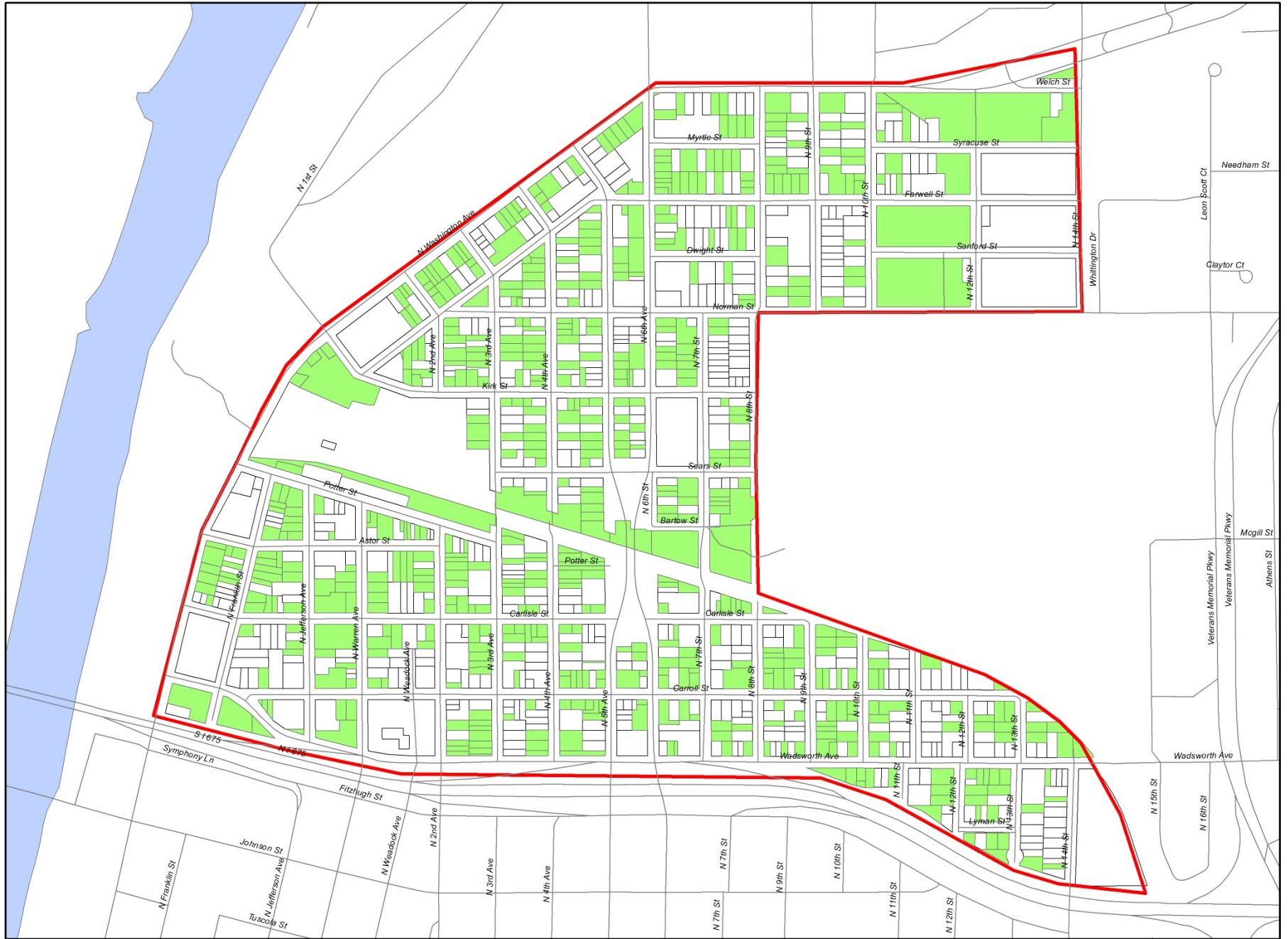




# Factors leading to decline

- Tax cap – 7.5 mills with maximum of \$3.83 million/year
- *Water sales to adjacent municipalities*
- Crime rates
- School system decline
- Flight to the suburbs

City of Saginaw - Green Zone Vacant Parcels 2005



City of Saginaw - Green Zone Vacant Parcels 2012

